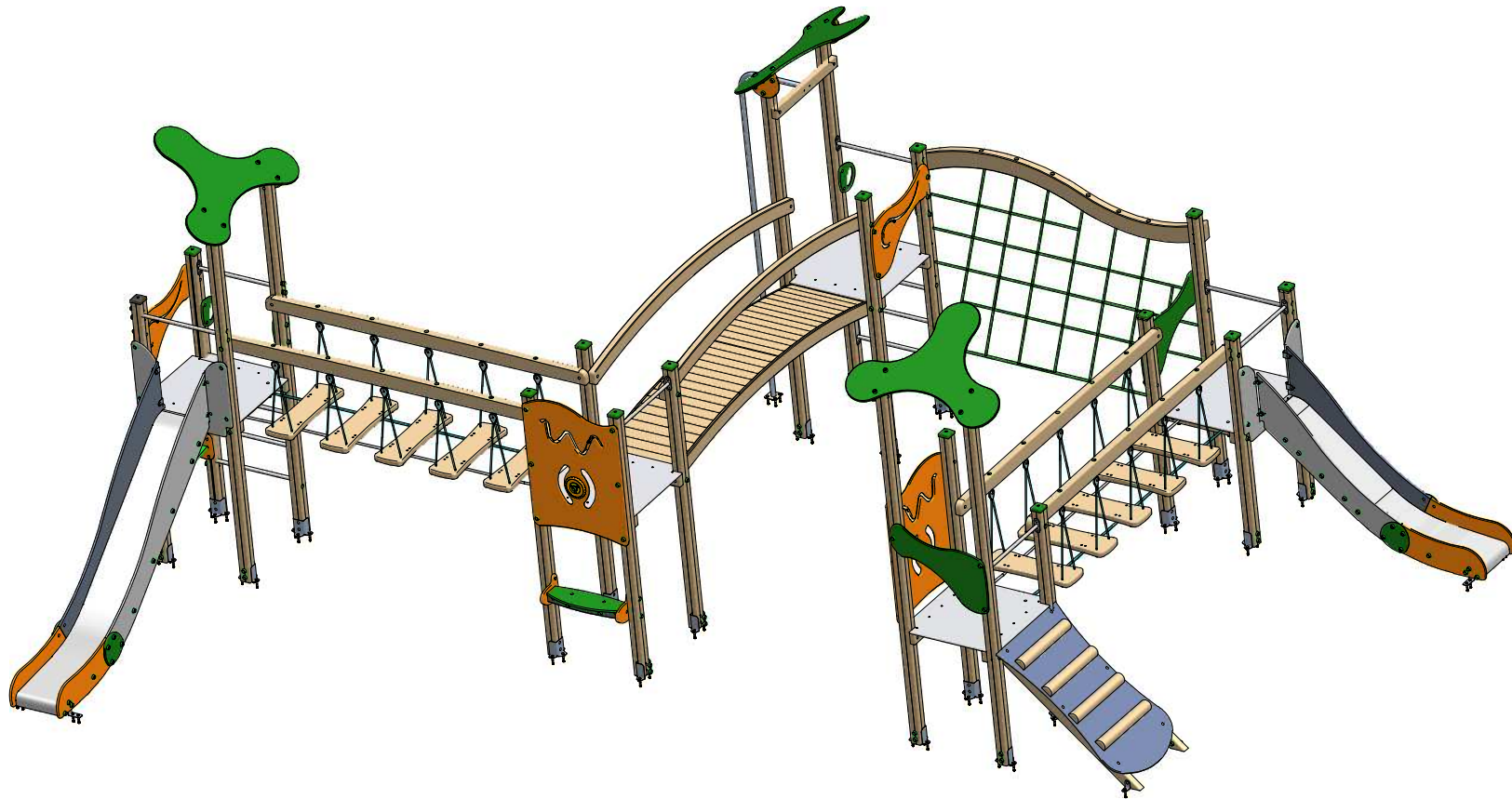




INSTRUCCIONES DE MONTAJE / ASSEMBLY INSTRUCTIONS / INSTRUCCIONS DE MONTAGE / INSTRUÇÕES DE MONTAGEM

KLASIK 6

JK-006





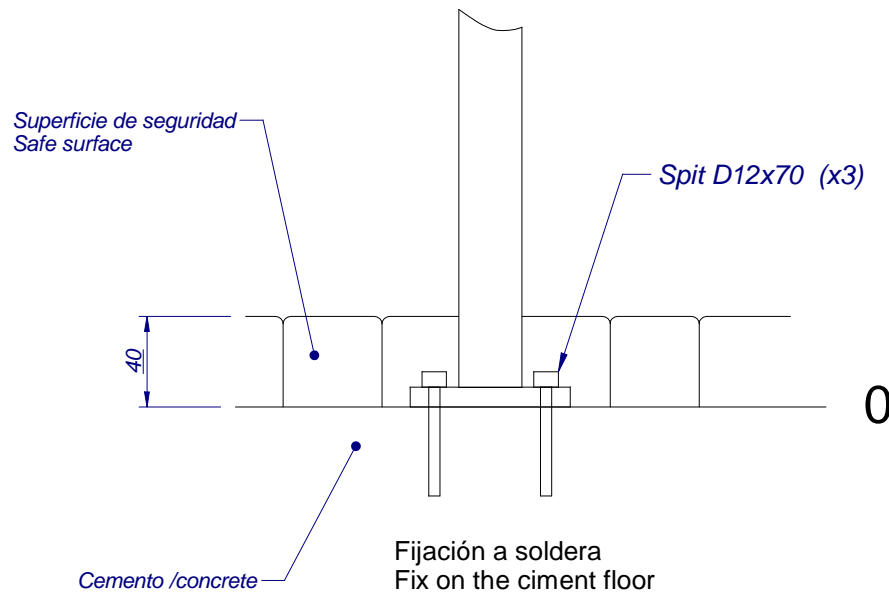
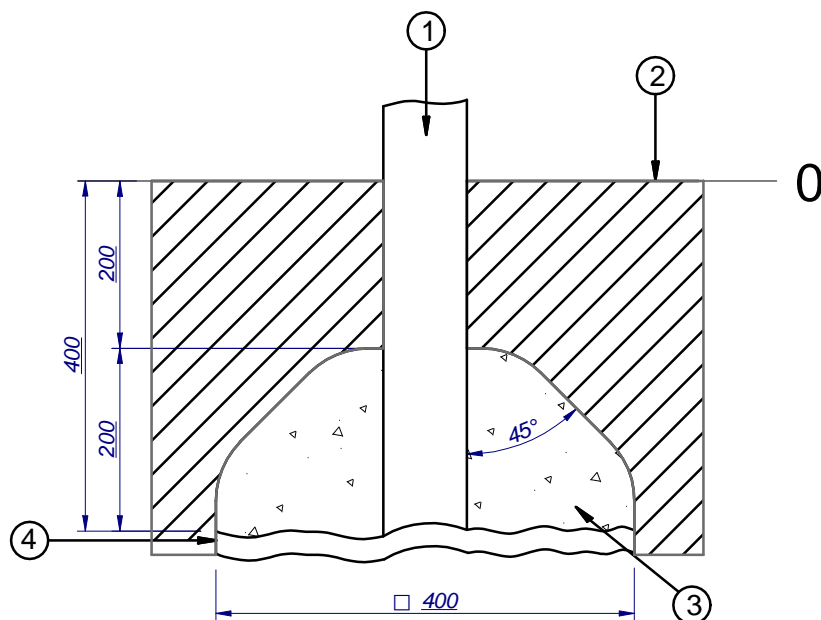
INSTRUCCIONES DE MONTAJE / ASSEMBLY INSTRUCTIONS / INSTRUCCIONS DE MONTAGE / INSTRUÇÕES DE MONTAGEM

KLASIK 6

JK-006

Fijación a tierra / Fix on the floor

- 1. Poste / post
- 2. Superficie juego / playing surface
- 3. Cemento / concret
- 4. Capa grave / Grave layer



La superficie de juego debe estar cubierta por un suelo que absorva el impacto, según normativa EN-1176-1:2009

The playing surface must be covered by a floor to avoid the impact, according to standard EN-1176-1-2009

Importante: para el montaje y cimentación del juego son necesarias herramientas empleadas habitualmente en la construcción.

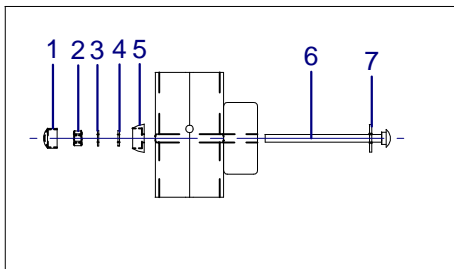
Important: for installation and foundation of the game are necessary tools usually employed in the construction



INSTRUCCIONES DE MONTAJE / ASSEMBLY INSTRUCTIONS / INSTRUCCIONS DE MONTAGE / INSTRUÇÕES DE MONTAGEM

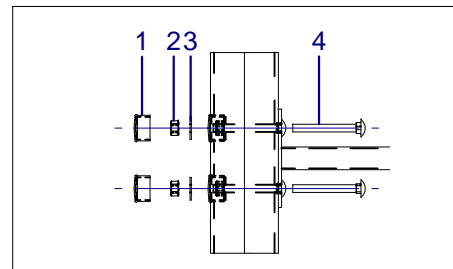
KLASIK 6

JK-006



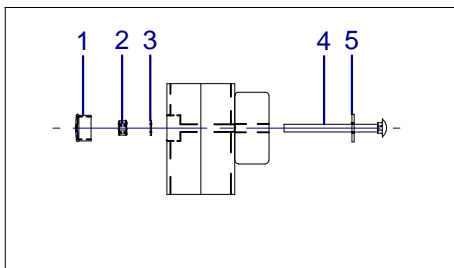
S1

- 1.-Tapon
- 2.-Tuerca/nut M10
- 3.-Arandela/washer grower M10
- 4.-Arandela/washer DIN125 M10
- 5.-Donut
- 6.-M10x160
- 7.-Arandela/washer DIN9021 M12



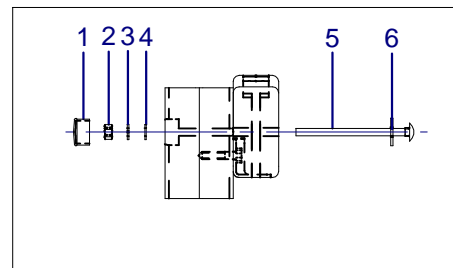
S4

- 1.-Tapon/cap
- 2.-Tuerca/nut M10
- 3.-Arandela/washer DIN9021 M10
- 4.-M10x90



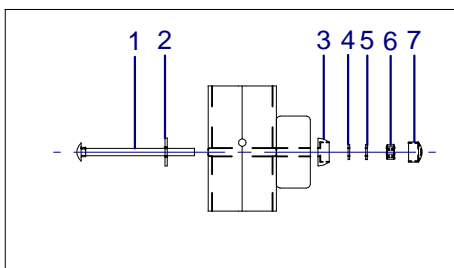
S2

- 1.-Tapon/cap
- 2.-Tuerca/nut M10
- 3.-Arandela/washer DIN9021 M10
- 4.-M10x130
- 5.-Arandela/washer DIN9021 M12



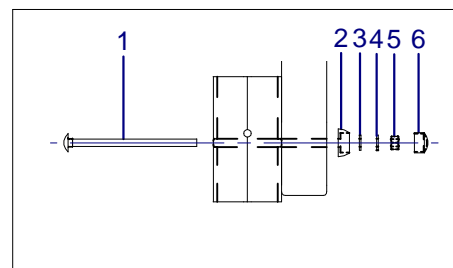
S5

- 1.-Tapon/cap
- 2.-Tuerca/nut M10
- 3.-Arandela/washer grower M10
- 4.-Arandela/washer DIN9021 M10
- 5.-M10x130
- 6.-Arandela/washer DIN9021 M12



S3

- 1.-M10x130
- 2.-Arandela/washer DIN9021 M12
- 3.-Donut
- 4.-Arandela/washer DIN125 M10
- 5.-Arandela/washer grower M10
- 6.-Tuerca/Nut M10
- 7.-Tapon



S6

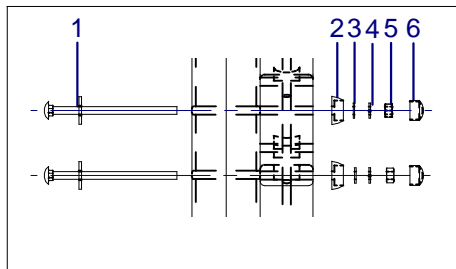
- 1.-M10x170
- 2.-Donut
- 3.-Arandela/washer DIN125 M10
- 4.-Arandela/washer grower M10
- 5.-Tuerca/nut M10
- 6.-Tapon/cap



INSTRUCCIONES DE MONTAJE / ASSEMBLY INSTRUCTIONS / INSTRUCCIONS DE MONTAGE / INSTRUÇÕES DE MONTAGEM

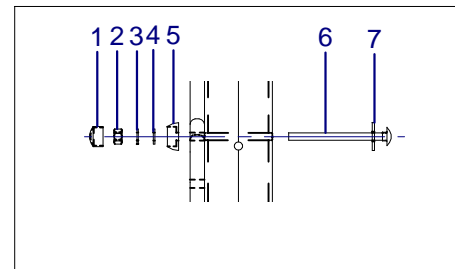
KLASIK 6

JK-006



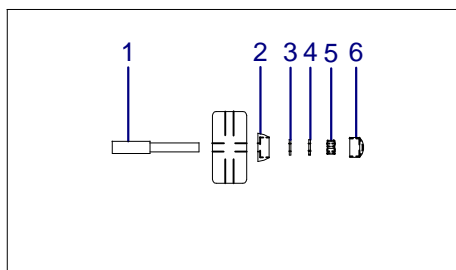
S7

- 1.-M10x170
- 2.-Donut
- 3.-Arandela/washer DIN125 M10
- 4.-Arandela/washer grower M10
- 5.-Tuerca/nut M10
- 6.-Tapon/cap



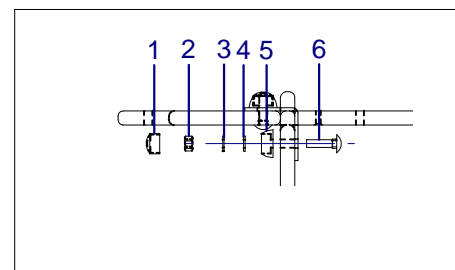
S10

- 1.-Tapon/cap
- 2.-Tuerca/nut M10
- 3.-Arandela/washer grower M10
- 4.-Arandela/washer DIN125 M10
- 5.-Donut
- 6.-M10x130
- 7.-Arandela DIN9021 M12



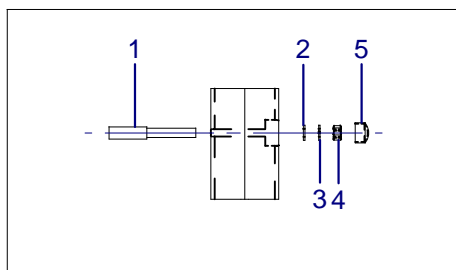
S8

- 1.-Cuerda puente/rope bridge
- 2.-Donut
- 3.-Arandela/washer DIN125 M10
- 4.-Arandela/washer grower M10
- 5.-Tuerca/nut M10
- 6.-Tapon/cap



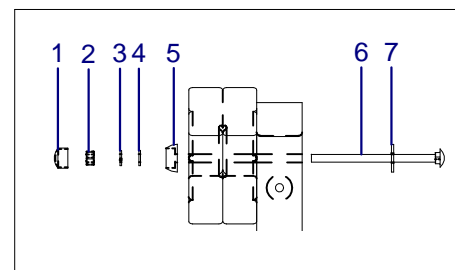
S11

- 1.-Tapon/cap
- 2.-Tuerca/nut M10
- 3.-Arandela/washer grower M10
- 4.-Arandela/washer DIN125 M10
- 5.-Donut
- 6.-M10x40



S9

- 1.-Malla/mesh M12
- 2.-Arandela/washer DIN9021 M10
- 3.-Arandela/washer grower M10
- 4.-Tuerca/nut M10
- 5.-Tapon/cap



S12

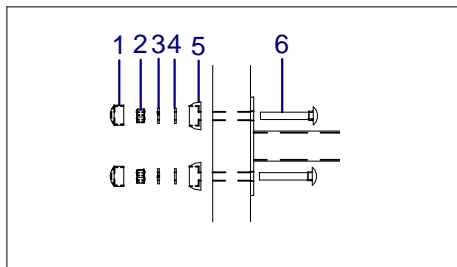
- 1.-Tapon/cap
- 2.-Tuerca/nut M10
- 3.-Arandela/washer grower M10
- 4.-Arandela/washer DIN125 M10
- 5.-Donut
- 6.-M10x200
- 7.-Arandela/washer DIN9021 M12



INSTRUCCIONES DE MONTAJE / ASSEMBLY INSTRUCTIONS / INSTRUCCIONS DE MONTAGE / INSTRUÇÕES DE MONTAGEM

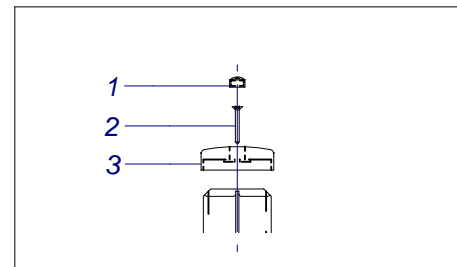
KLASIK 6

JK-006



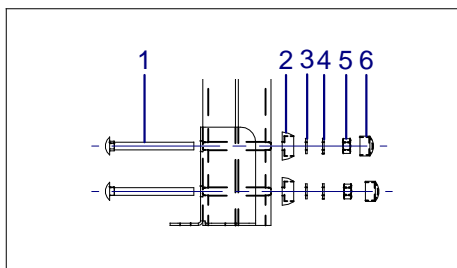
S15

- 1.-Tapon/cap
- 2.-Tuerca/nut M10
- 3.-Arandela/washer grower M10
- 4.-Arandela/washer DIN125 M10
- 5.-Tuerca/Nut M10
- 6.-M10x70



S17

- 1.-Tap/cap
- 2.-Torx 5x60
- 3.-Tapon cuadrado/square cap



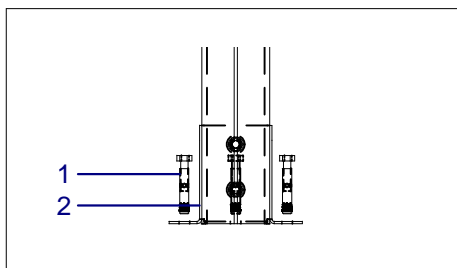
S13

- 1.-M10x110
- 2.-Donut
- 3.-Arandela/washer DIN125 M10
- 4.-Arandela/washer grower M10
- 5.-Tuerca/Nut M10
- 6.-Tapon



Importante: situar las zapatas metalicas segun dibujo en el interior de cada torre.

Important: place metal pieces according drawing, inside the towers.



S14

- 1.-SPIT D12x70 (x3)
- 2.-Zapata metalica / metal piece

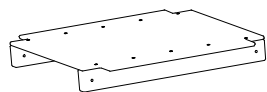




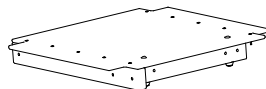
INSTRUCCIONES DE MONTAJE / ASSEMBLY INSTRUCTIONS / INSTRUCCIONS DE MONTAGE / INSTRUÇÕES DE MONTAGEM

KLASIK 6

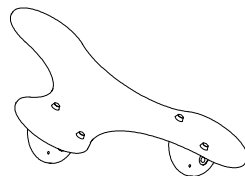
JK-006



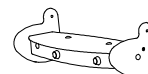
XJKPL
x1



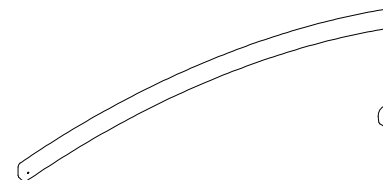
XJKPLP
x4



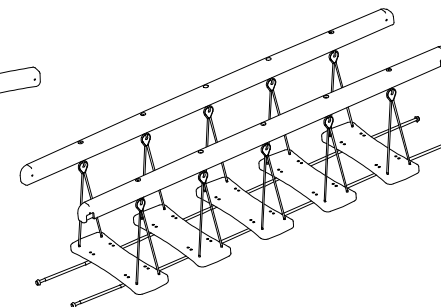
XJKTE
x3



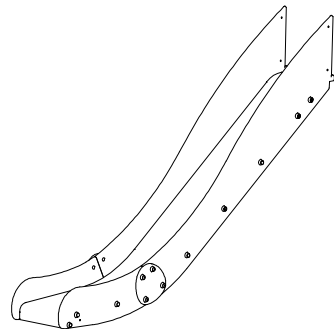
XJKMO
x2



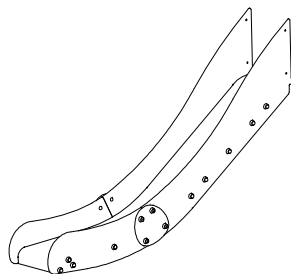
<JKPAP
x2



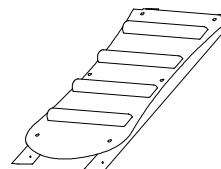
XJKPC
x2



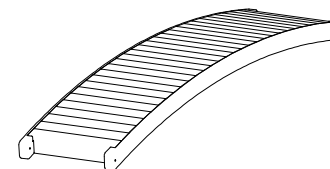
XJKT01
x1



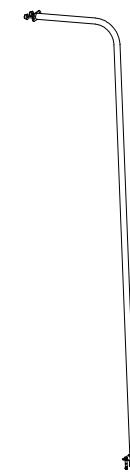
XJKT02
x1



XJKRA
x1



XJKPA
x1



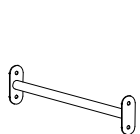
<JKBB
x1



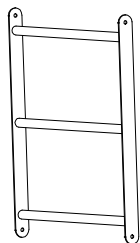
INSTRUCCIONES DE MONTAJE / ASSEMBLY INSTRUCTIONS / INSTRUCCIONS DE MONTAGE / INSTRUÇÕES DE MONTAGEM

KLASIK 6

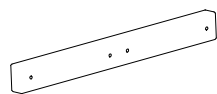
JK-006



<JKBR
x7



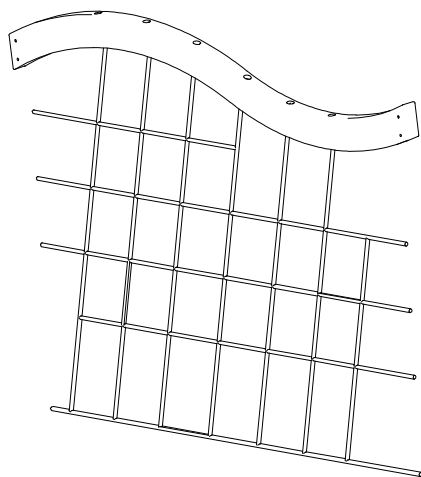
<JKESCA
x2



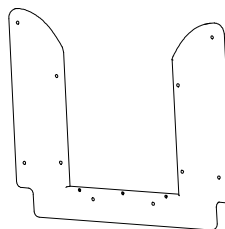
<JKBBTR
x1



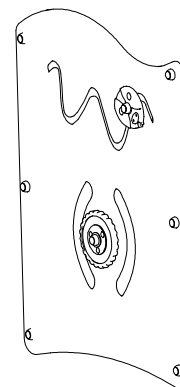
<JKAG
x4



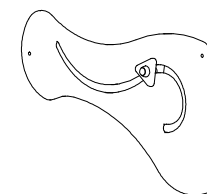
XJKM1
x1



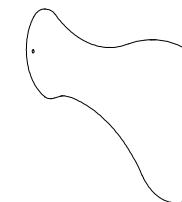
<JKTOP
x2



XJKPLG
x2



XJKPLPQ
x2



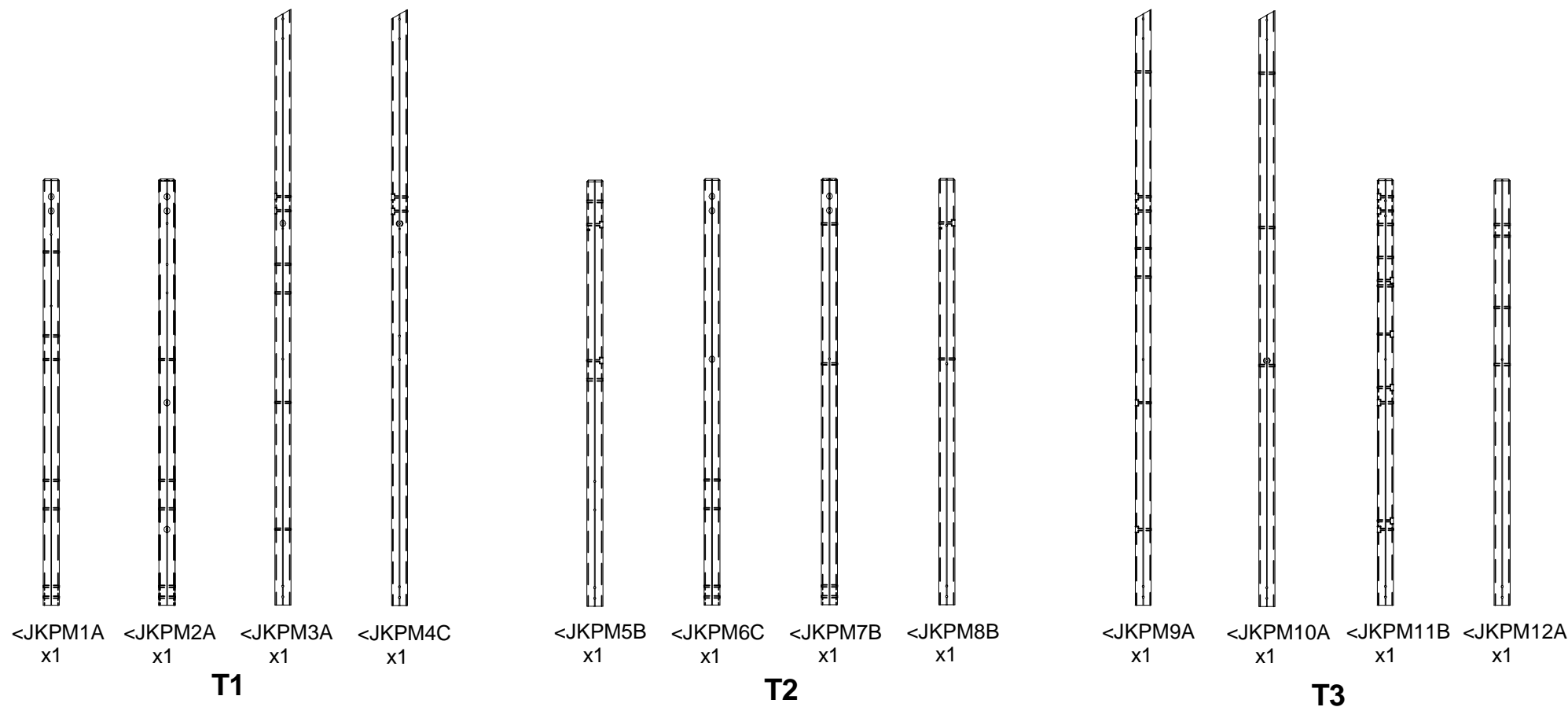
<JKPP
x2



INSTRUCCIONES DE MONTAJE / ASSEMBLY INSTRUCTIONS / INSTRUCCIONS DE MONTAGE / INSTRUÇÕES DE MONTAGEM

KLASIK 6

JK-006

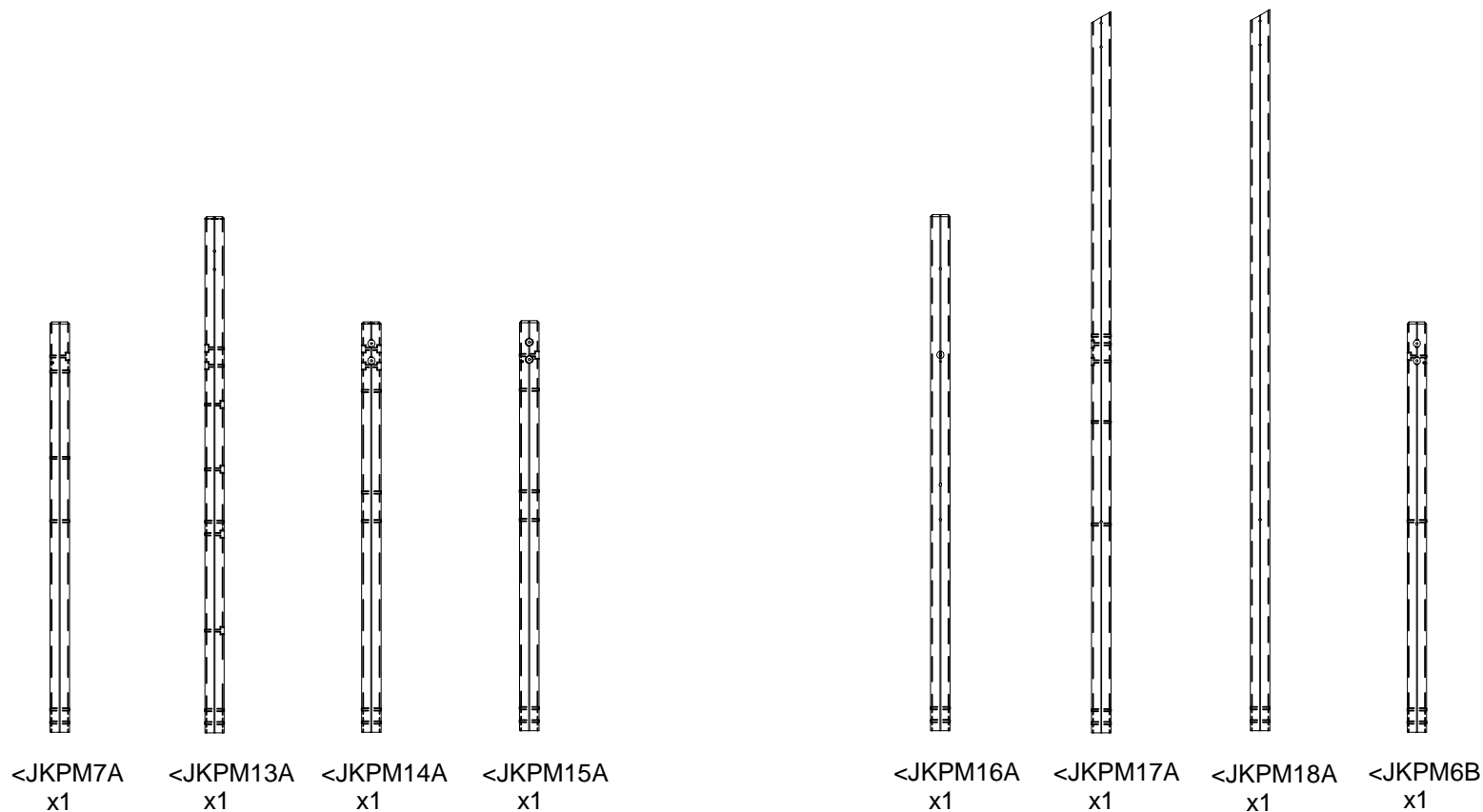




INSTRUCCIONES DE MONTAJE / ASSEMBLY INSTRUCTIONS / INSTRUCCIONS DE MONTAGE / INSTRUÇÕES DE MONTAGEM

KLASIK 6

JK-006



T4

T5



INSTRUCCIONES DE MONTAJE / ASSEMBLY INSTRUCTIONS / INSTRUCCIONS DE MONTAGE / INSTRUÇÕES DE MONTAGEM

KLASIK 6

JK-006

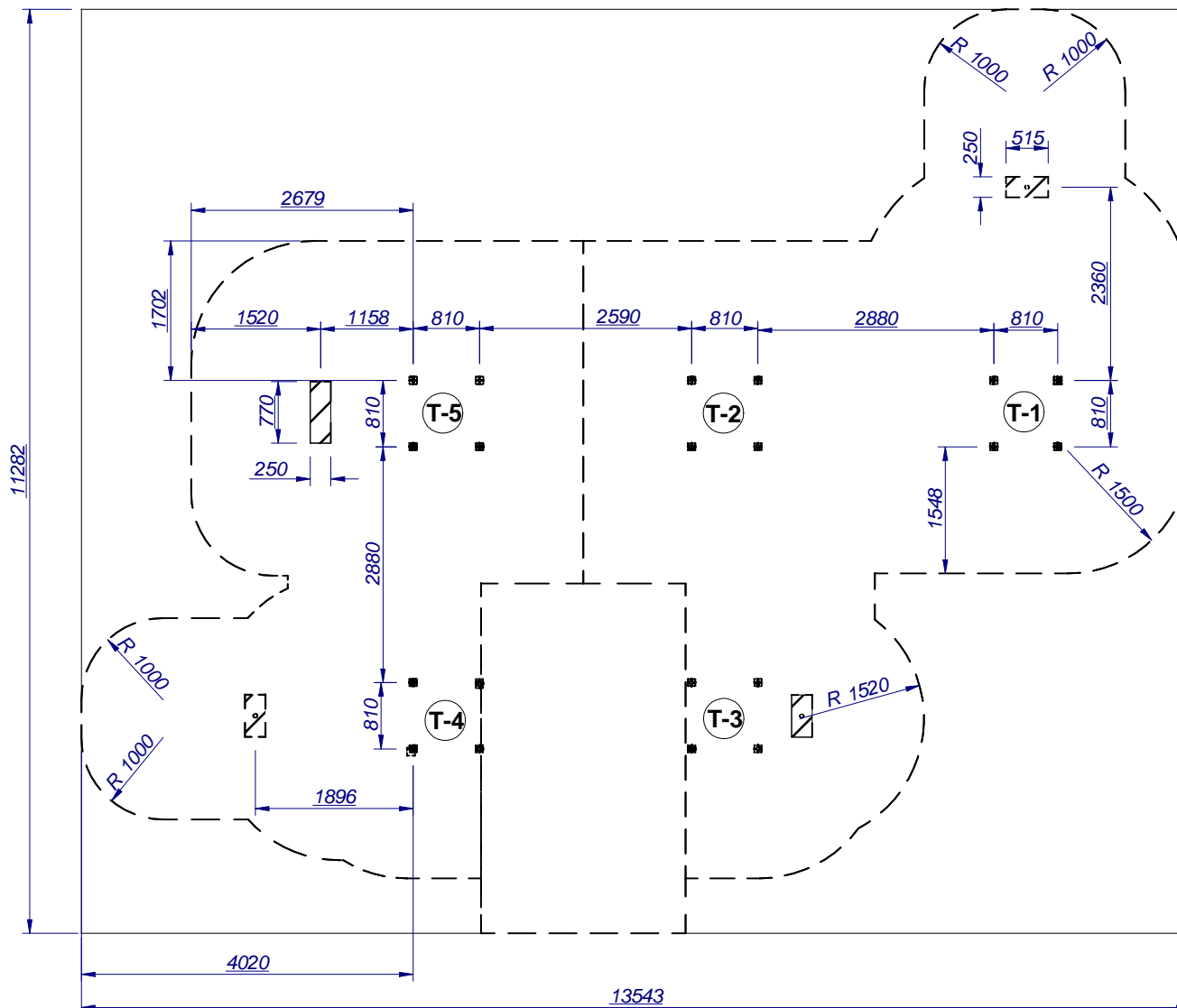
- Agujero para poste
Hole for post
Trou pour le porteaux
- Zona a excavar
Excavation zone
Zone a crosse

Area de seguridad:
Safe area: 90,25 m2

Altura max. caída:
Maximum drop high: 2400 mm

Nº usuarios:
Number of users: 29

Edad:
Age: 3 - 12

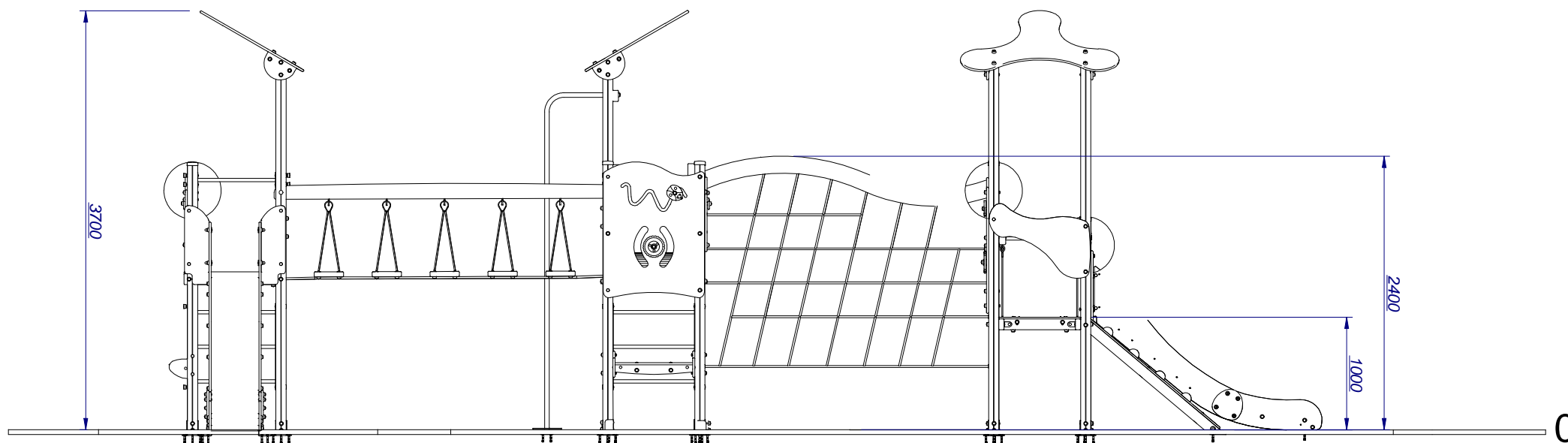




INSTRUCCIONES DE MONTAJE / ASSEMBLY INSTRUCTIONS / INSTRUCCIONS DE MONTAGE / INSTRUÇÕES DE MONTAGEM

KLASIK 6

JK-006

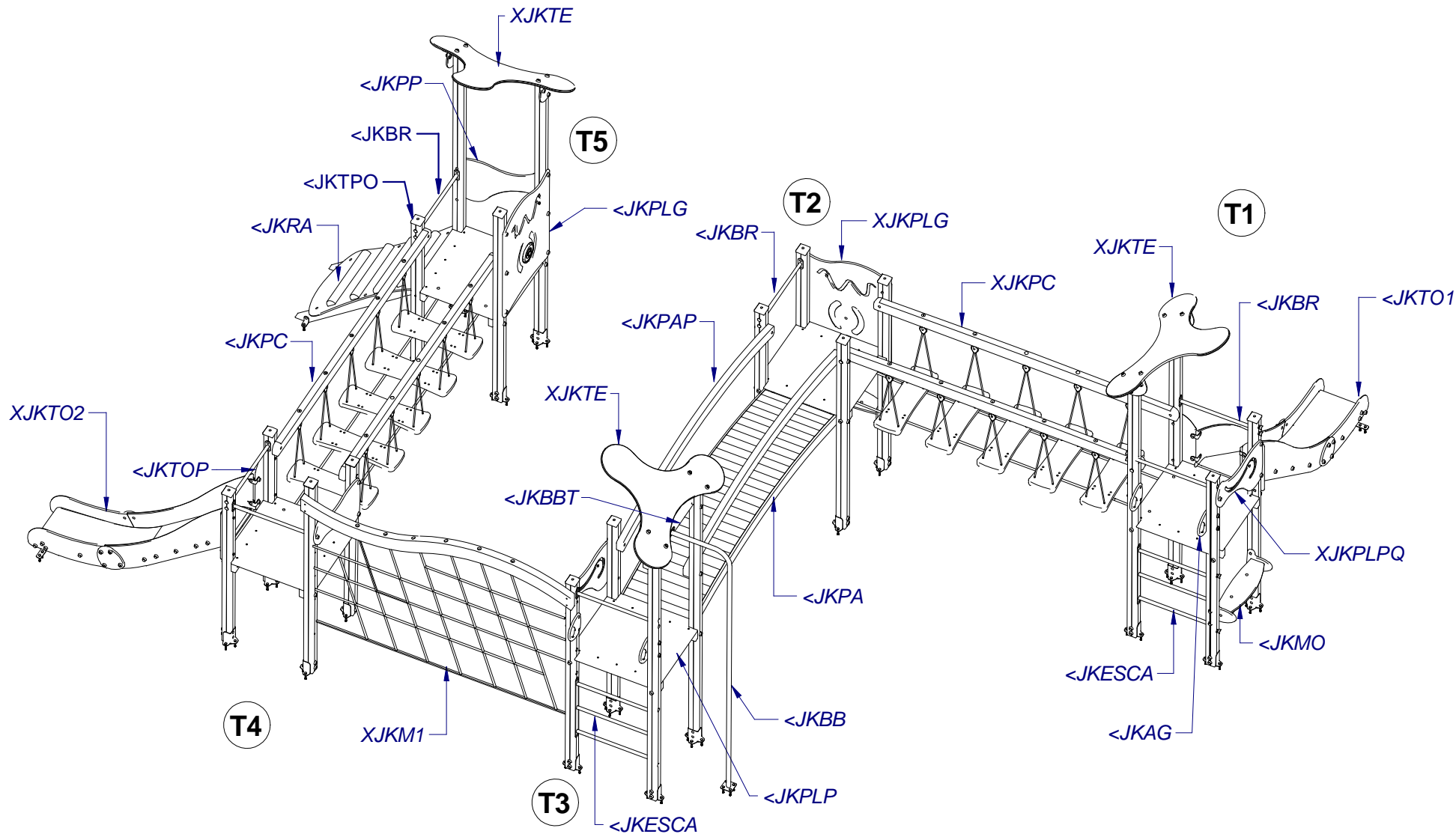




INSTRUCCIONES DE MONTAJE / ASSEMBLY INSTRUCTIONS / INSTRUCCIONES DE MONTAGE / INSTRUÇÕES DE MONTAGEM

KLASIK 6

JK-006

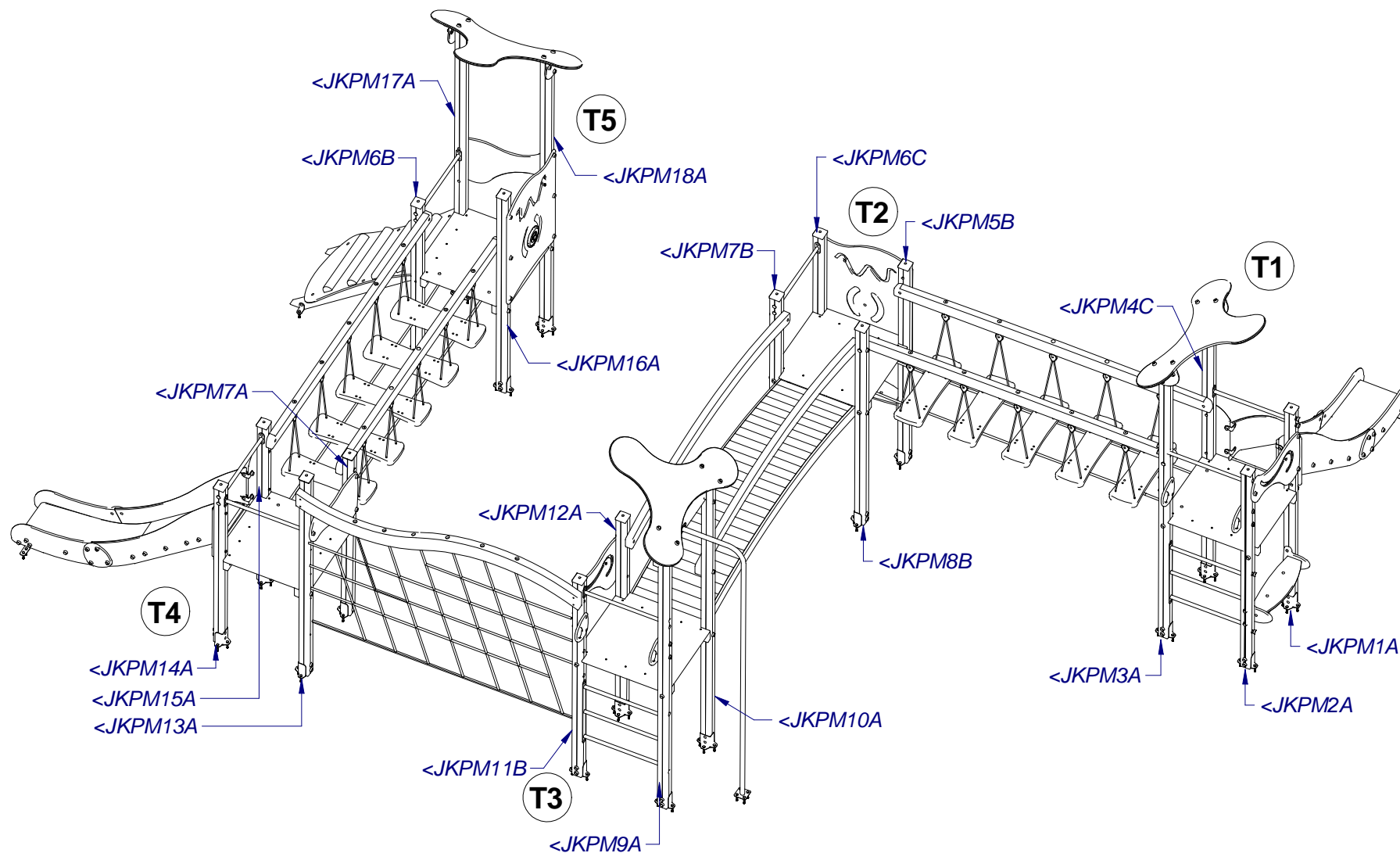




INSTRUCCIONES DE MONTAJE / ASSEMBLY INSTRUCTIONS / INSTRUCCIONS DE MONTAGE / INSTRUÇÕES DE MONTAGEM

KLASIK 6

JK-006





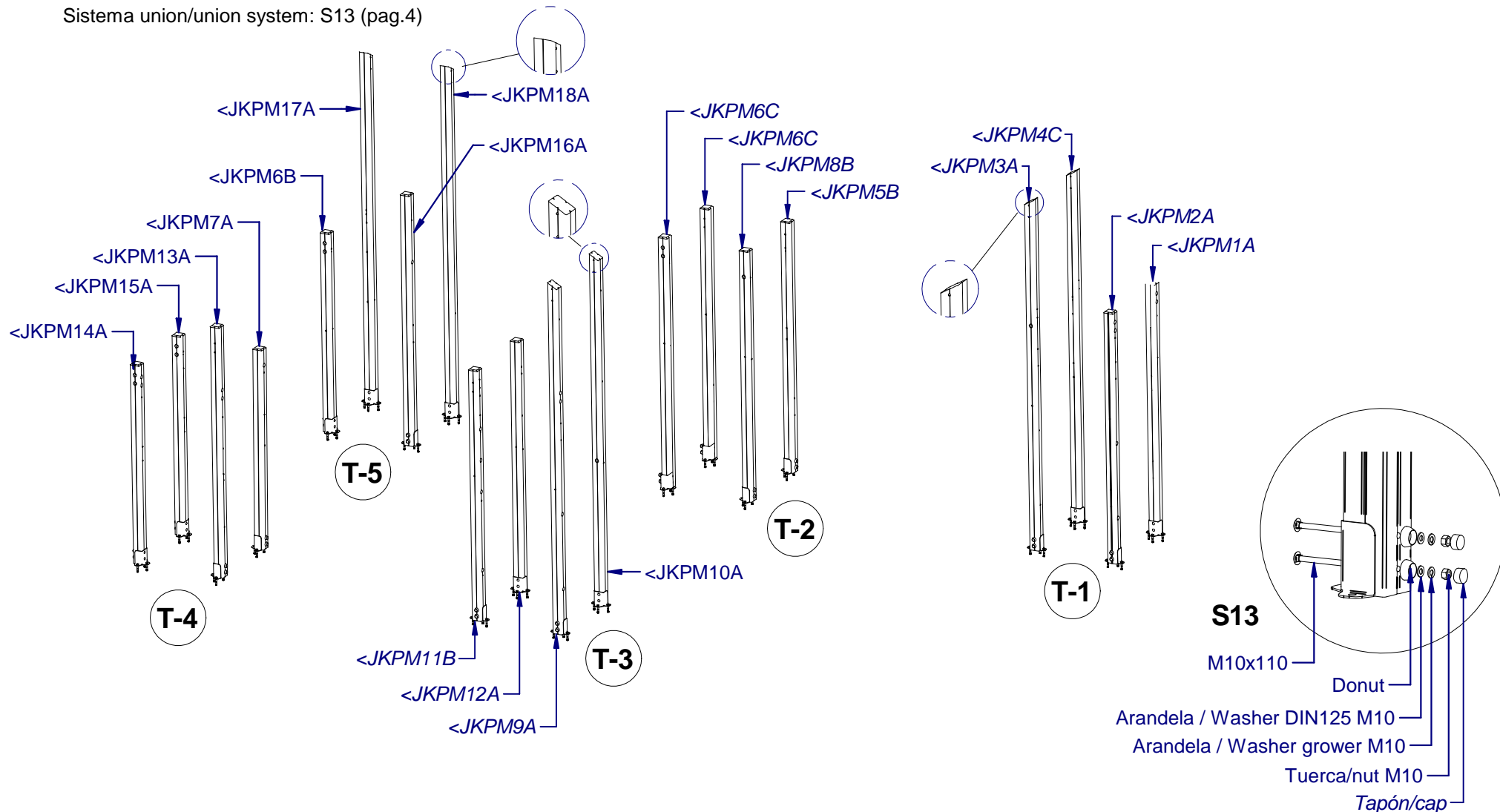
INSTRUCCIONES DE MONTAJE / ASSEMBLY INSTRUCTIONS / INSTRUCCIONS DE MONTAGE / INSTRUÇÕES DE MONTAGEM

KLASIK 6

JK-006

1.-Montaje zapatas metalicas/assembly metal pieces.

Sistema union/union system: S13 (pag.4)





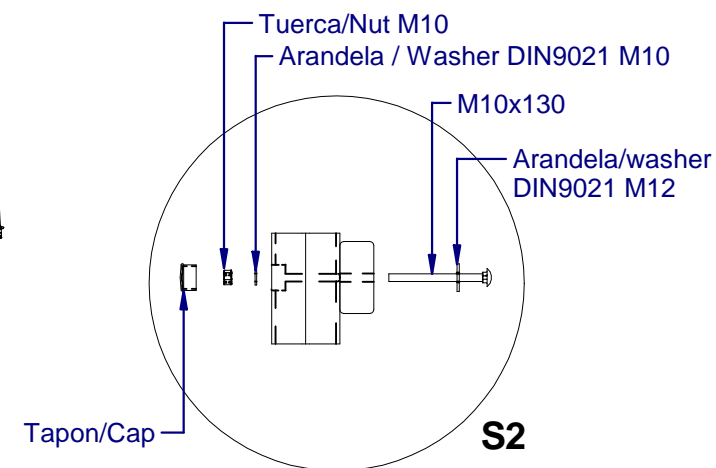
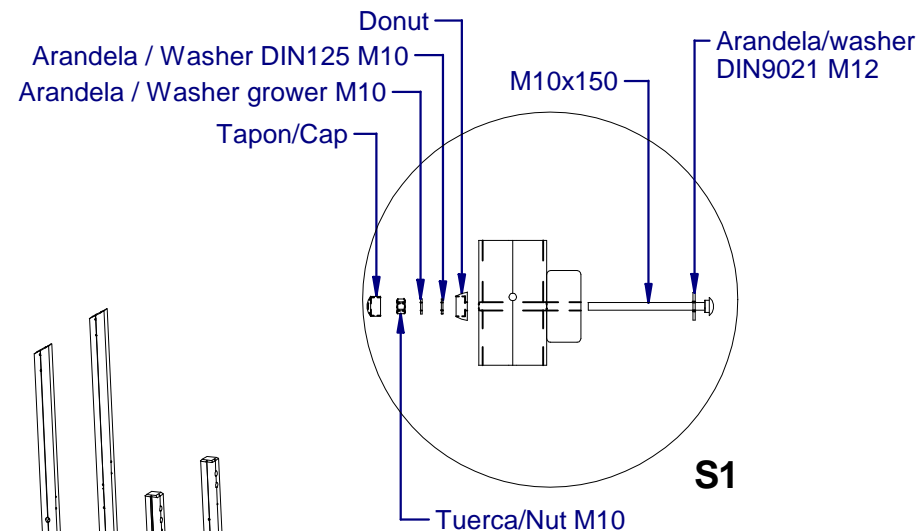
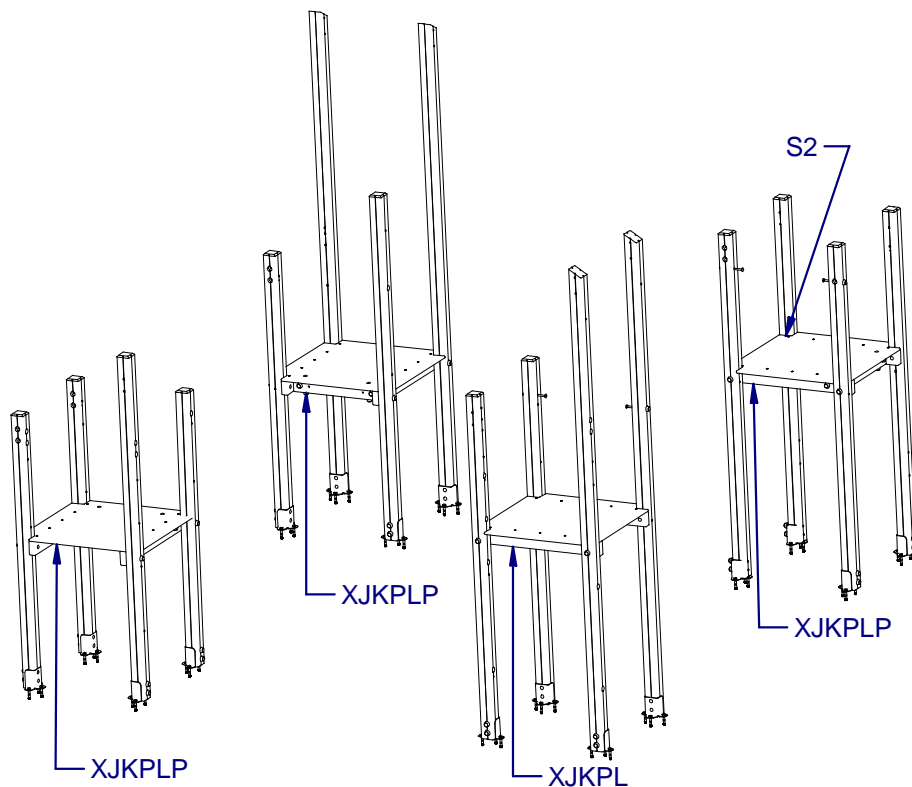
INSTRUCCIONES DE MONTAJE / ASSEMBLY INSTRUCTIONS / INSTRUCCIONS DE MONTAGE / INSTRUÇÕES DE MONTAGEM

KLASIK 6

JK-006

2.-Montaje plataforma/assembly platform

Sistema union/union system: S1-S2





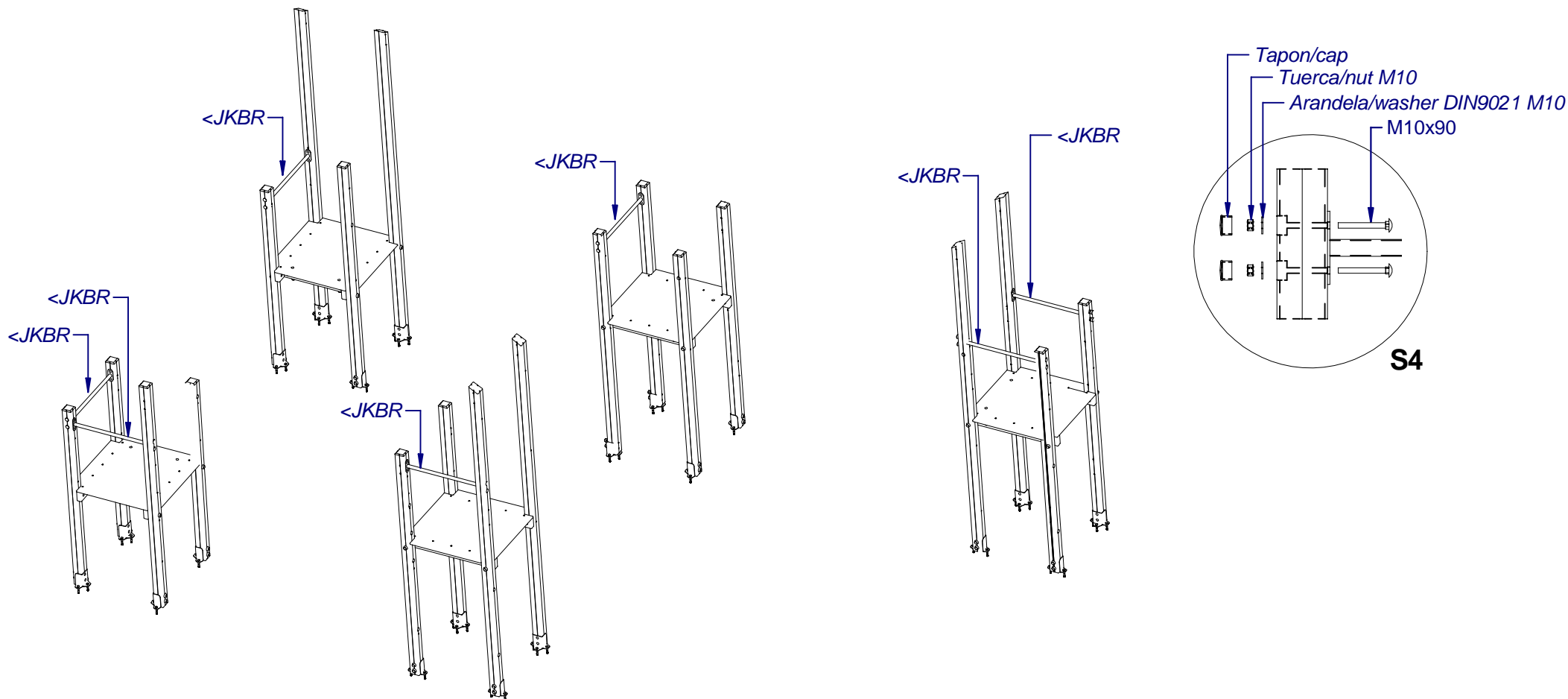
INSTRUCCIONES DE MONTAJE / ASSEMBLY INSTRUCTIONS / INSTRUCCIONS DE MONTAGE / INSTRUÇÕES DE MONTAGEM

KLASIK 6

JK-006

3.-Montaje barras metalicas/assembly metal bar

Sistema union/union system: S4





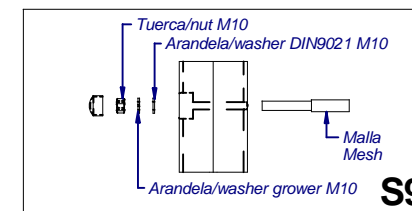
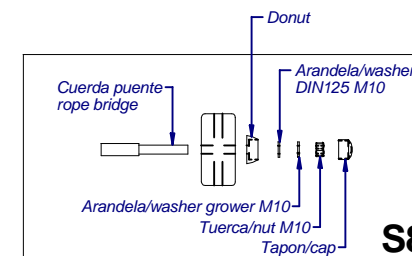
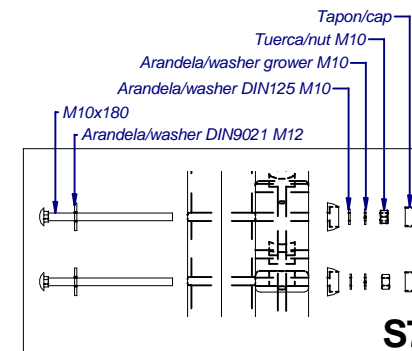
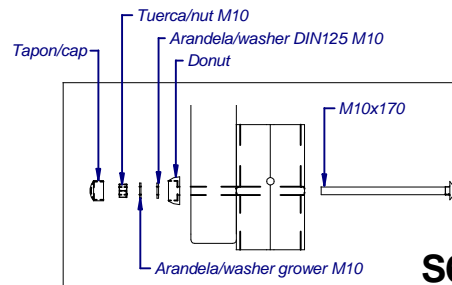
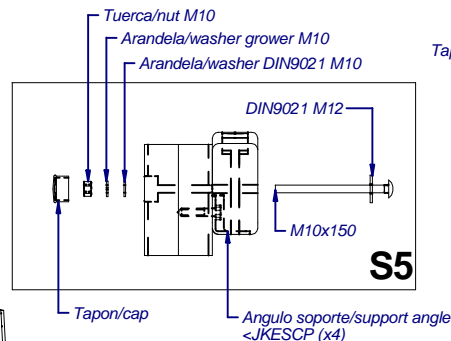
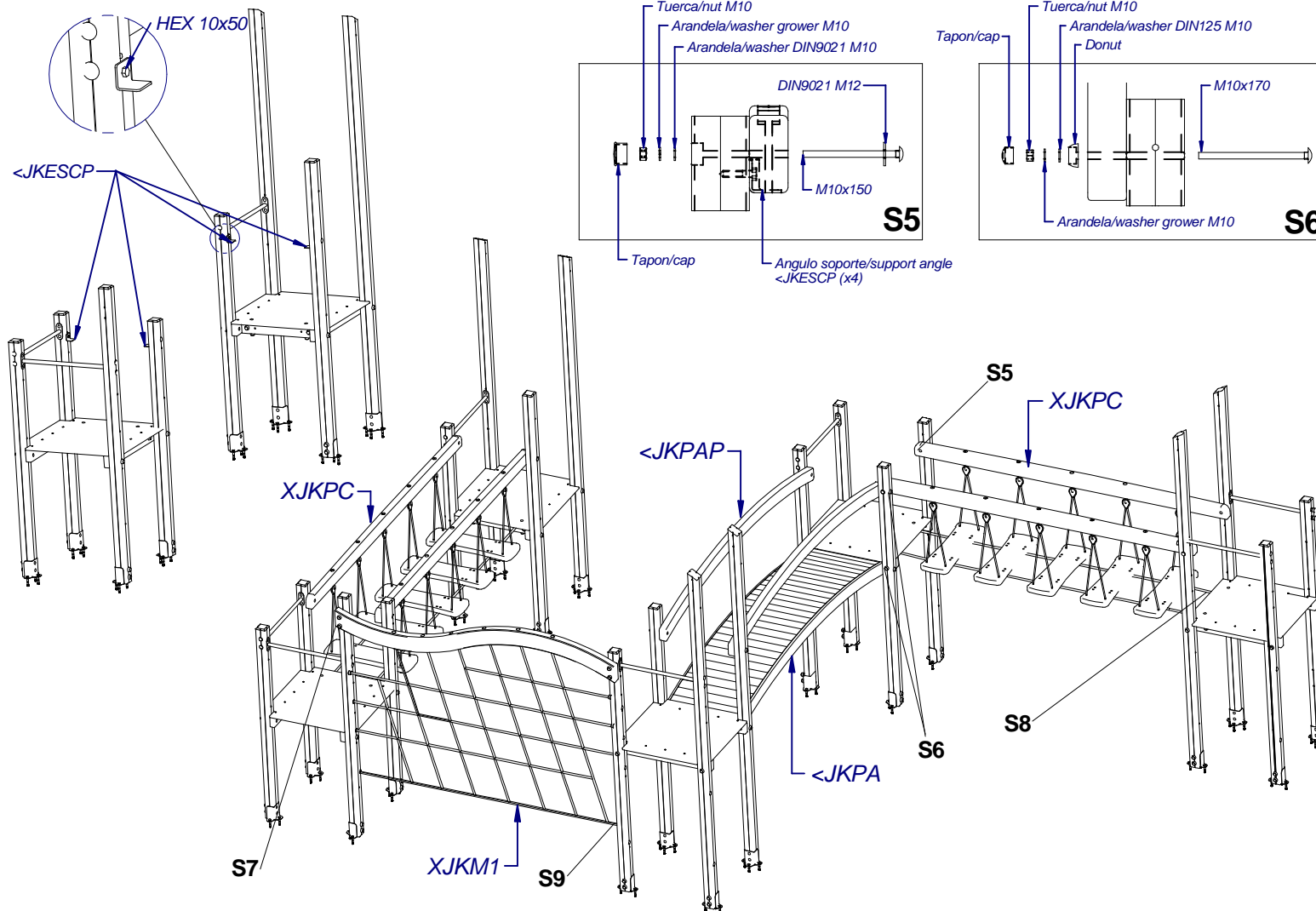
INSTRUCCIONES DE MONTAJE / ASSEMBLY INSTRUCTIONS / INSTRUCCIONS DE MONTAGE / INSTRUÇÕES DE MONTAGEM

KLASIK 6

JK-006

4.-Montaje malla,puente y pasarela/assembly mesh, bridge and gangway

Sistema union/union system: S5-S6-S7-S8-S9





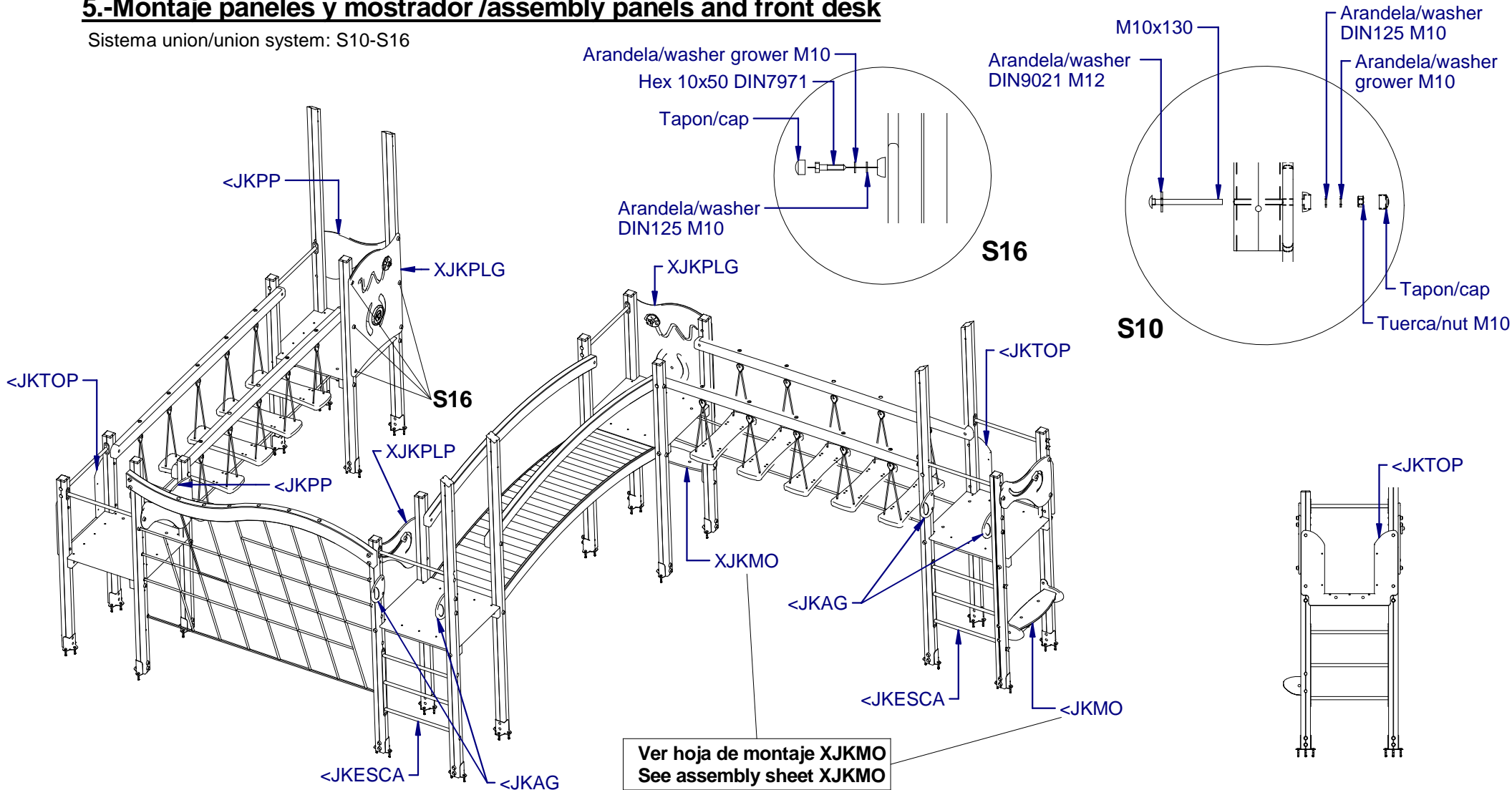
INSTRUCCIONES DE MONTAJE / ASSEMBLY INSTRUCTIONS / INSTRUCCIONS DE MONTAGE / INSTRUÇÕES DE MONTAGEM

KLASIK 6

JK-006

5.-Montaje paneles y mostrador /assembly panels and front desk

Sistema union/union system: S10-S16





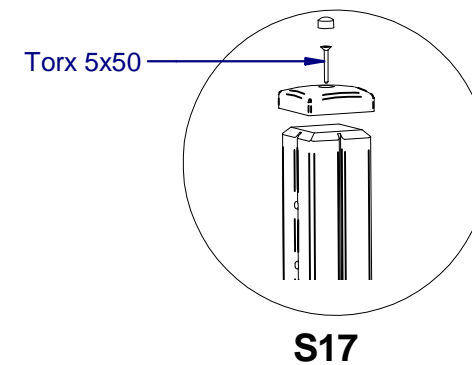
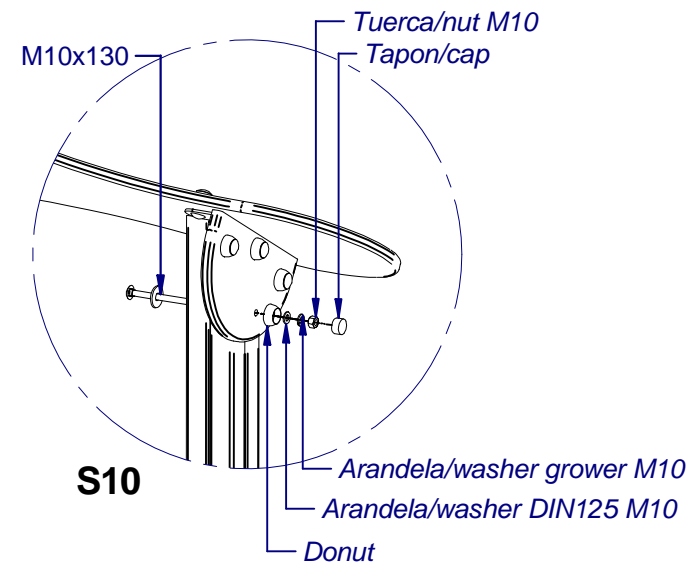
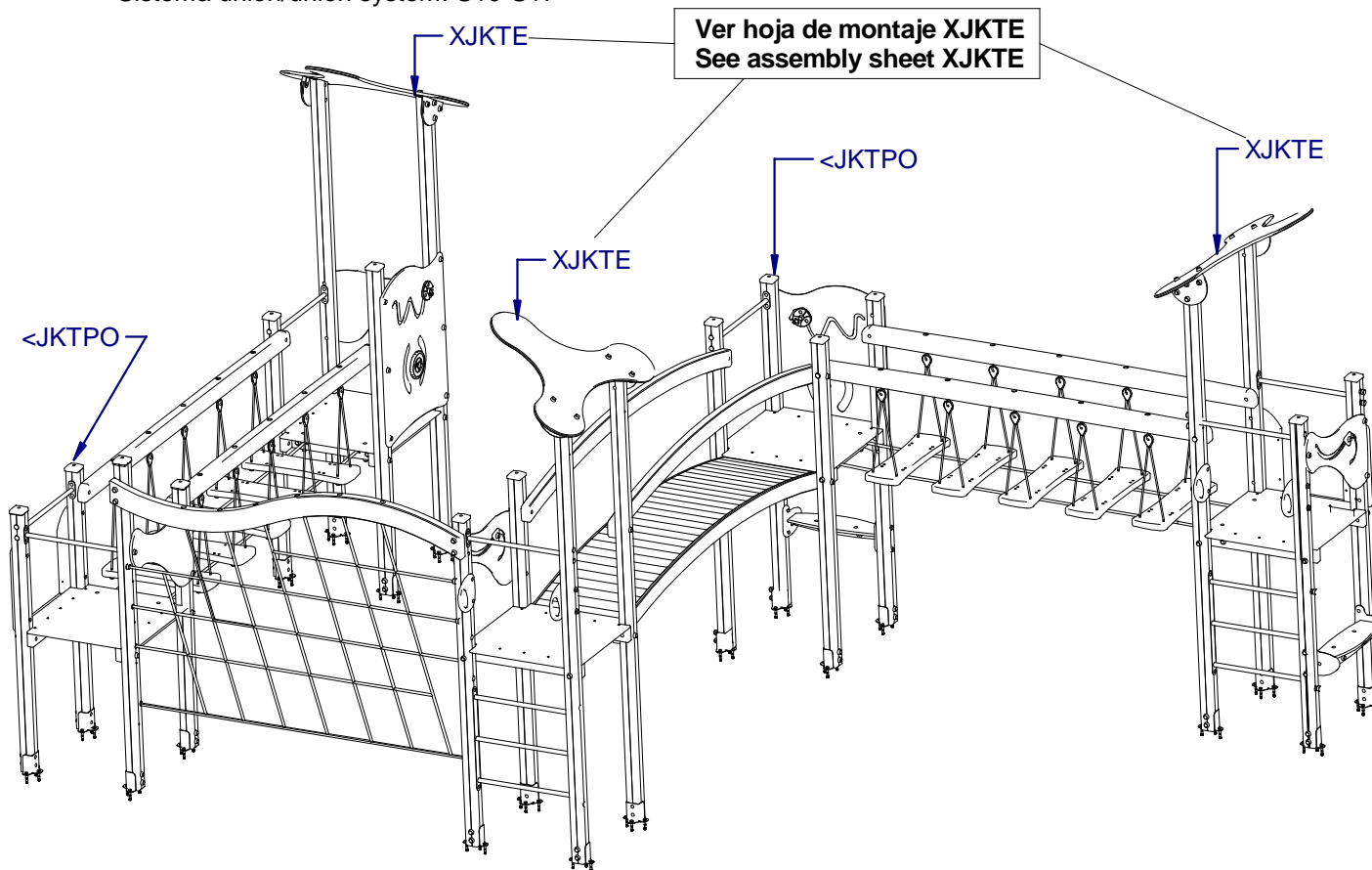
INSTRUCCIONES DE MONTAJE / ASSEMBLY INSTRUCTIONS / INSTRUCCIONS DE MONTAGE / INSTRUÇÕES DE MONTAGEM

KLASIK 6

JK-006

6.-Montaje techo-tapones/assembly roof-caps

Sistema union/union system: S10-S17





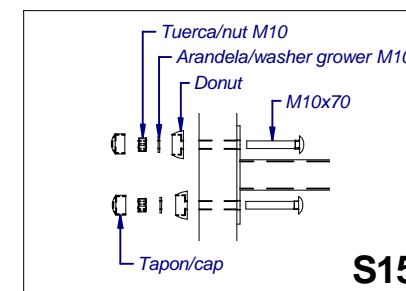
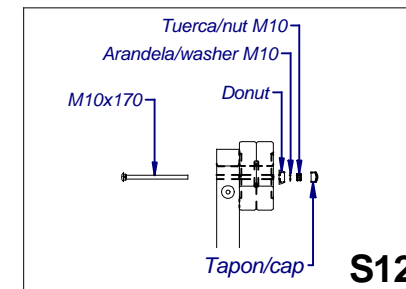
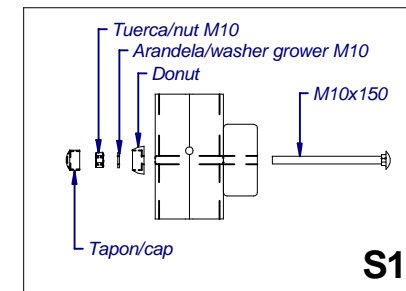
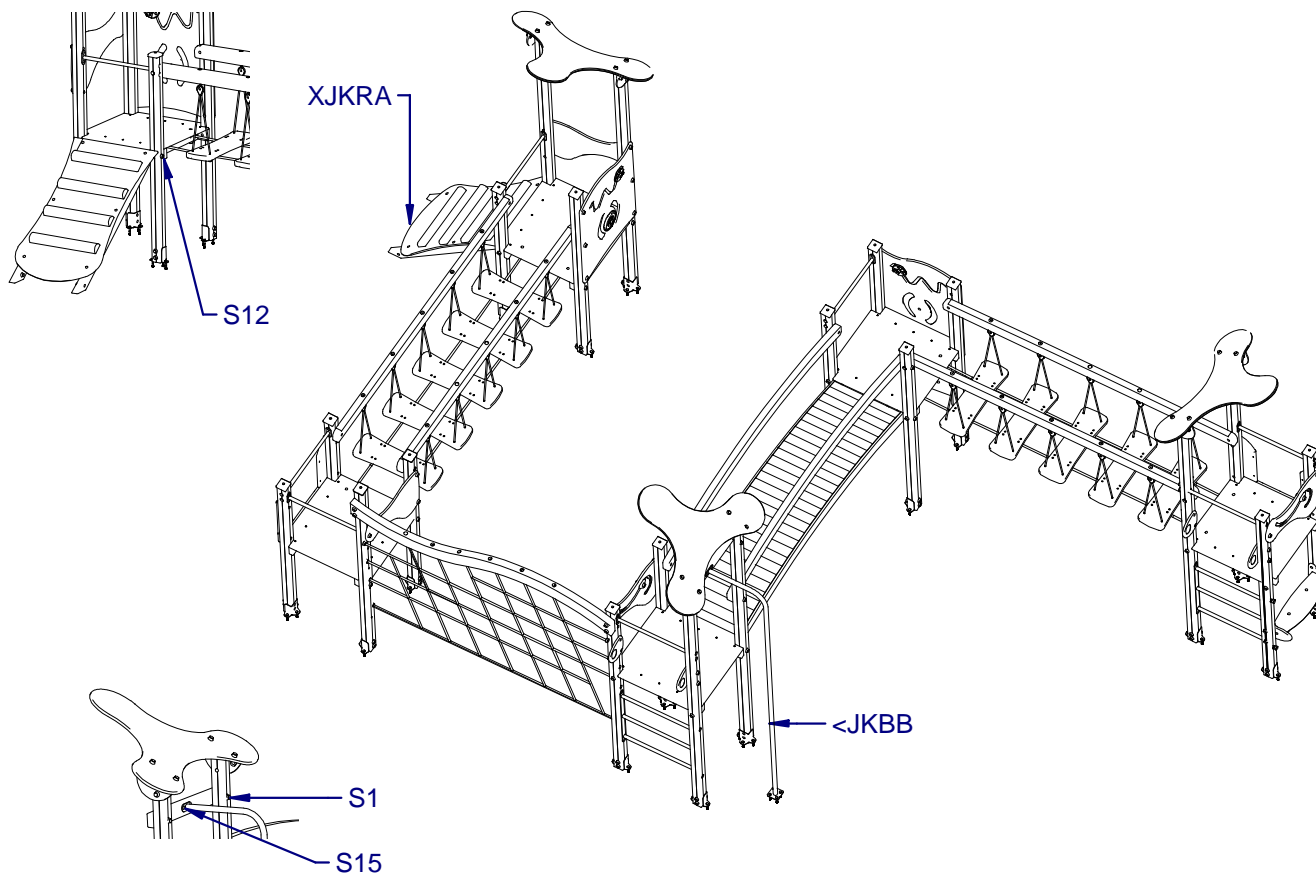
INSTRUCCIONES DE MONTAJE / ASSEMBLY INSTRUCTIONS / INSTRUCCIONS DE MONTAGE / INSTRUÇÕES DE MONTAGEM

KLASIK 6BM

JK-006BM

7.-Montaje rampa y barra bomberos/ramp assembly and fireman bar

Sistema union/union system: S1-S12-S15





INSTRUCCIONES DE MONTAJE / ASSEMBLY INSTRUCTIONS / INSTRUCCIONES DE MONTAGE / INSTRUÇÕES DE MONTAGEM

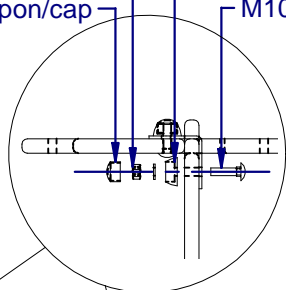
KLASIK 6BM

JK-006BM

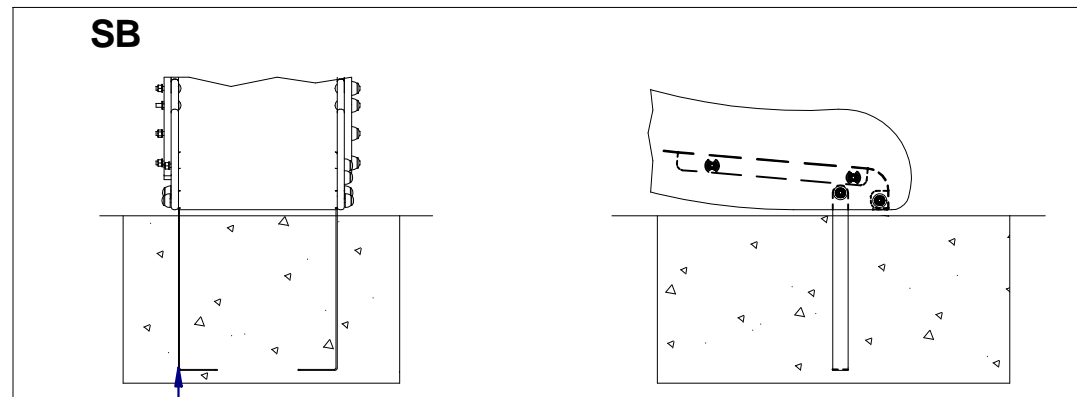
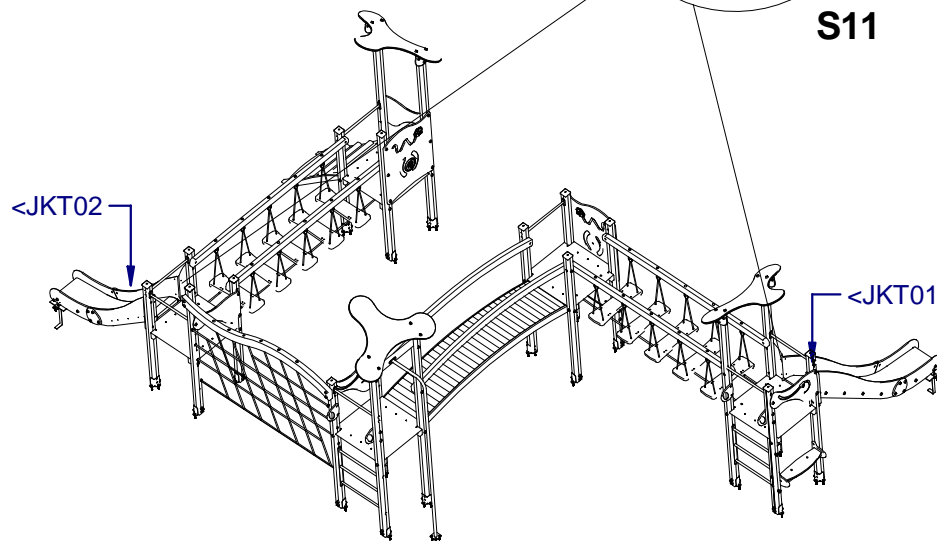
8.-Montaje toboganes/slides assembly

Sistema union/union system: S11-S14

M10
Tapon/cap
DONUT
M10x40

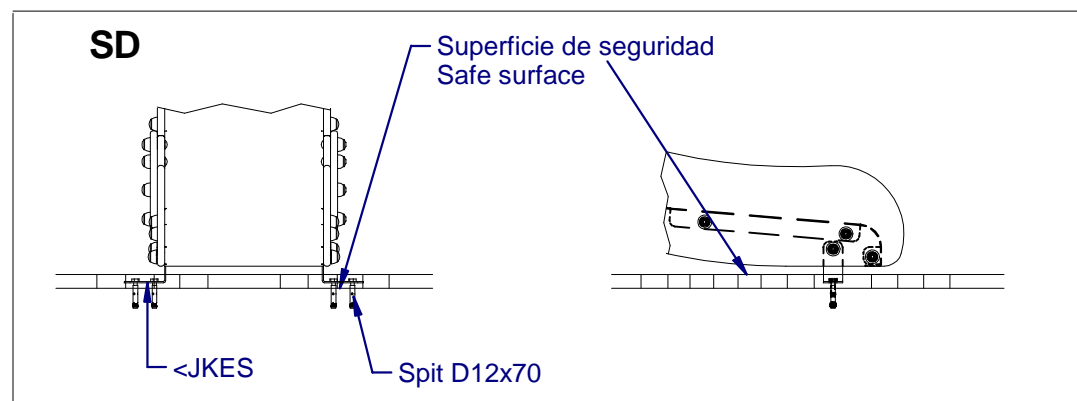


S11



SB

<JKATSB



SD

Superficie de seguridad
Safe surface

<JKES

Spit D12x70

**INSTRUCCIONES DE MONTAJE / ASSEMBLY INSTRUCTIONS / INSTRUCCIONS DE MONTAGE / INSTRUÇÕES DE MONTAGEM****KLASIK 6BM**

JK-006BM

INSPECCIÓN PREVIA A SU USO

- 1.- Comprobar si se han respetado las distancias de seguridad marcadas en el plano adjunto.
- 2.- Limpiar e igualar las áreas de seguridad de las distintas instalaciones de juego.
- 3.- Comprobar los aparatos de juego utilizandolos uno mismo.
- 4.- Comprobar que los tornillos y tuercas estén bien apretados, poniendo mayor atención a aquellos que por la naturaleza del juego son susceptibles de aflojarse.
- 5.- Comprobar si todas las tuercas están debidamente apretadas, y los agujeros cubiertos por tapones.
- 6.- Revisar que los cimientos, se encuentran a la profundidad adecuada (ver la pagina 2).

INSPECTION PRIOR TO USE

- 1.- Check if you have the necessary clearances Security marked on the attached map.
- 2.-Clean and level the security areas various gaming facilities.
- 3.- Check gaming devices using them yourself.
- 4.- Check that nuts and bolts are tight, paying more attention to those who by the nature of are susceptible to loose the game.
- 5.- Check that all bolts are properly tightened, and holes covered with gaps.
- 6.- Check that the foundation, are at the proper depth (see pag 2).